



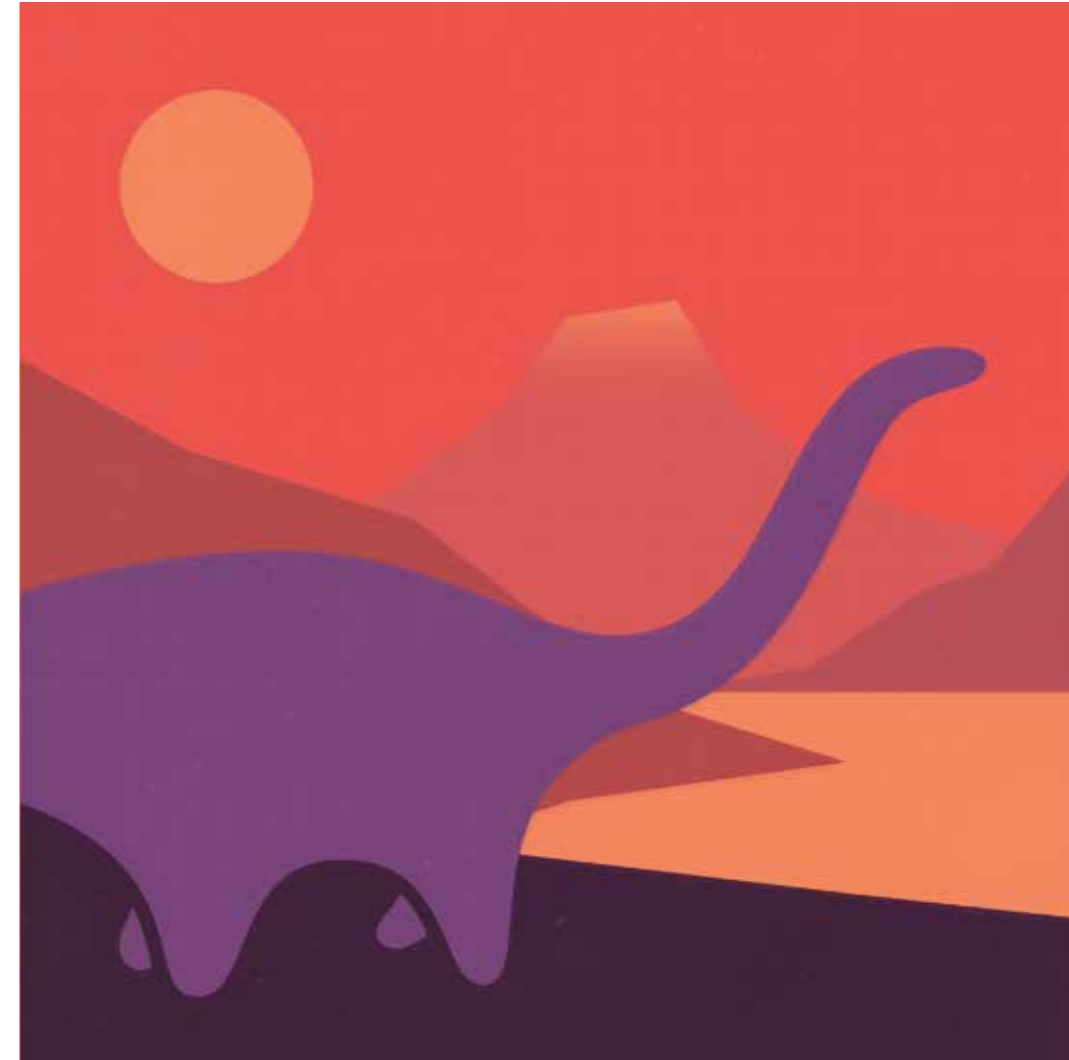
*Tracking the footprints of  
dinosaurs who lived in the  
Region of Valencia*



The Region of Valencia:  
**Camins de Dinosaur.**



[www.comunitatvalenciana.com](http://www.comunitatvalenciana.com)



# Camins de Dinosaur.

## (Dinosaur trails)

An opportunity to explore the Region of Valencia and discover its vast, varied paleontological heritage. Thirty resources focused on paleontology are distributed all throughout Valencia. Come and enjoy archaeological sites, museums and museum collections that will help you to learn and enjoy the exciting world of dinosaurs.

Come, take a look and discover the ancestors of dinosaurs and their footprints in Bejis, with the most important Mid-Triassic site in the Region of Valencia. Discover the large sauropods from the end of the Jurassic in the Alpuente museum and the footprints of the carnivore dinosaurs that lived with them at the Corcolilla BIC site.

At the Morella museum, get to meet Morelladon, the first dinosaur in Castellón. At Cincorres, you can visit the only site with replicas of dinosaur bones in the Region of Valencia, and meet dinosaurs from Els Ports in the museum. At the Elche MUPE, you can learn about other dinosaurs from other places in the world.

In Millares, you can walk next to the footprints of the last dinosaurs to tread the Region of Valencia. Finally, in Agost, you can see evidence of the impact that led to the extinction of most dinosaurs.

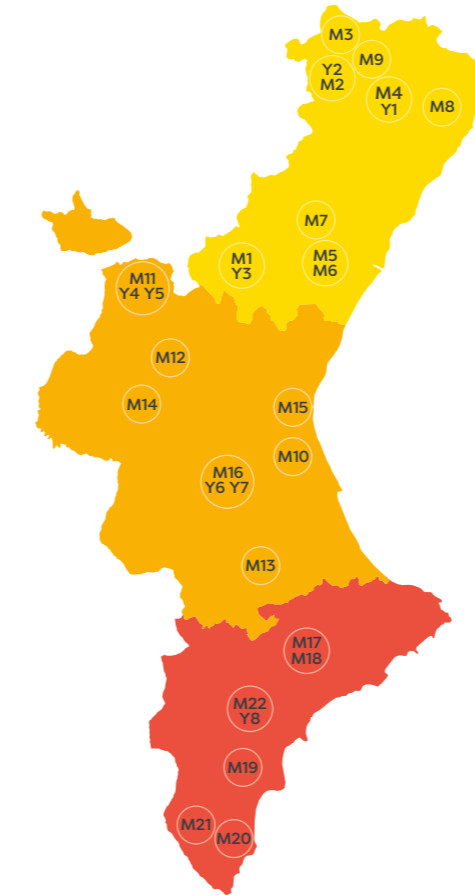
- Invertebrates
- Mesozoic dinosaurs and vertebrates
- Cenozoic mammals and vertebrates

### Castelló

- ● **M1 - Bejis** Municipal Museum of Archaeology and Ethnology of Bejis.  
Tel. 964 120 161 / 964 120 348 • bejis.es/es/content/museo-etnologia-arqueologia
- **M2 - Cincorres** Permanent Museum Collection  
Tel. 964 181 428 • www.dinomania.es
- **M3 - Forcall** Permanent Museum Collection  
Tel. 964 171 290
- ● **M4 - Morella** "Time of Dinosaurs" Museum  
Tel. 964 173 032 • www.morella.net/morella/conocenos/museos/dinosaur
- ● **M5 - Onda** Municipal Museum Collection of Paleontology and Mineralogy  
Tel. 964 602 855 • www.onda.es/patrimonio/museos/coleccion-museografica-municipal-de-paleontologia-y-mineralogia
- ● **M6 - Onda** "El Carmen" Museum of Natural Sciences  
Tel. 964 600 730 • www.museodelcarmen.com
- ● **M7 - Ribesalbes** Museum Collection of La Baronia  
Tel. 964 625 001 • www.ribesalbes.es/paleontologia/museo-baronia
- ● **M8 - Sant Mateu** Juan Cano Forner Sant Mateu Collection of Paleontology  
Tel. 964 416 590 • turismosantmateu.es/museo-paleontologico-juan-cano-forner/
- **M9 - Portell** Municipal Collection of Paleontology  
Tel. 964 178 779
- Y1 - Morella** Ichnologic Site of Barranc de Vallivana (BIC)
- Y2 - Cincorres** "Dinomania" and Ana site
- Y3 - Bejis** Ichnologic Site of Bejis (BIC)

### Valencia

- ● **M10 - Alginet** Valencian Museum of Natural History  
Tel. 961 115 477 • www.mvhn.es
- ● **M11 - Alpuente** Paleontological Museum  
Tel. 962 101 001 • www.museopaleontologicoalpuente.net
- ● **M12 - Chera** Permanent Museum Collection and Education Centre of the Geological Park  
Tel. 962 332 001 • www.encherate.com/parquegeo/museo
- **M13 - Enguera** Municipal Archaeological Museum  
Tel. 962 225 138 • museoenenguera.jimdo.com
- ● **M14 - Requena** Municipal Museum  
Tel. 962 303 851 • www.turismorequena.es/que-ver/museos-y-visitas-de-interes/museo-municipal
- ● **M15 - Valencia** Museum of Natural Sciences  
Tel. 963 525 478 • www.museosymonumentosvalencia.com/museos/museo-ciencias-naturales
- **M16 - Millares** Museum Collection "José Martínez Royo"  
Tel. 962 519 000 • www.ayuntamientomillares.es/cultura-y-patrimonio/el-museo
- Y4 - Alpuente** Ichnologic Site of Cañada París II (BIC)
- Y5 - Alpuente** Ichnologic Site of Corcolilla (BIC)
- Y6 - Millares** Ichnologic Site of Tambuc Est (BIC)
- Y7 - Millares** Ichnologic Site of Tambuc



01



02



03



04



05



06



07

### Alacant

- ● **M17 - Alcoy** Municipal Archaeological Museum "Camil Visedo Moltó"  
Tel: 965 537 144 • www.alcoi.org/museu
- ● **M18 - Alcoy** Isurus Paleontological and Sciences Museum  
Tel: 965 541 775 • www.paleoisurus.com/\_MUSEO
- ● **M19 - Elche** Paleontological Museum  
Tel: 965 458 803 • www.cidarismpe.org/MUPE
- **M20 - Guardamar del Segura** Archaeological Museum  
Tel: 965 728 610 / 965 729 014 • www.magmuseo.com/info-museos/mag-museo-arqueologico-de-guardamar/
- **M21 - Rojales** Municipal Paleontological and Archaeological Museum  
Tel: 966 713 273 • museosderojales.es
- **M22 - Agost** Pottery Museum  
Tel: 965 691 199 • www.museoagost.com
- Y8 - Agost** Limit Site K/T

- 01 Paleontological Museum of Elche
- 02 Tracking theropod dinosaur footprints, Alpuente
- 03 Agost limit site K/T
- 04 "Temps de Dinosaur", Morella
- 05 Permanent Museum Collection, Cincorres
- 06 Ichnologic Site of Corcolilla (BIC), Alpuente
- 07 Museum of Natural Sciences, Valencia